



#### 411/21 Provan Street Campbell ACT

2  2  2 

Inspired by the style and functionality of Scandinavian architecture, Koben combines good design the luxurious finishes to create sophisticated, life-enriching spaces you will love to come home to.

Surrounded by beautiful green spaces, this apartment has fabulous views from two balconies to Parliament House and beyond.

Koben's interiors incorporate natural light, reflective surfaces and raw materials to create a strong sense of connection to the outdoors.

#### Apartment Features

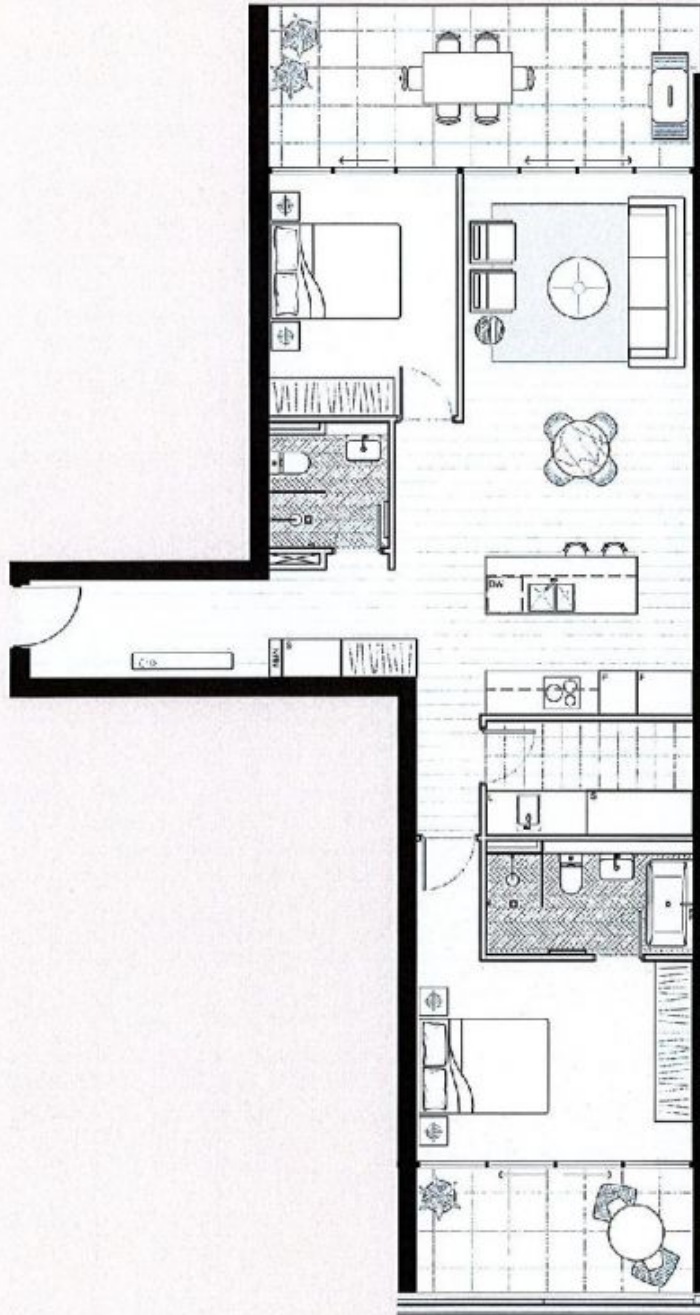
- Prime location within the Parliamentary triangle
- Perfectly positioned between Lake Burley Griffin, Hassett Park and the CBD

**View** : <https://www.borisproperty.com.au/lease/act/inner-north/campbell/residential/apartment/5541287>



**Lee-Anne Radstaak**  
0402219727

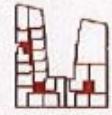
# K Ø B E N



3



4



5

## TYPE 26 | 2 BED, 2 BATH

## CAMPBELL 5

CARPARK	INTERNAL	EXTERNAL	TOTAL
2	101 m <sup>2</sup>	29 m <sup>2</sup>	130 m <sup>2</sup>

0 1 2 3 4 5h

We'll do our best to ensure the contents of these plans are correct at the time of printing. The information they contain is to be used as a guide only. The columns shown on the plans may vary in diameter or shape throughout the building. Area calculation is for gross floor area and is measured to the outside face of external and common area walls and to the centre line of party walls and includes stair shafts and vertical service ducts. Balcony area is measured to the inside face of balustrade. Any areas, stair shafts and vertical service ducts shown are indicative only and may be varied subject to detail design and authority requirements. The plans were completed prior to completion of the final design, engineering and construction of the building. Therefore the design, engineering, dimensions, fittings, finishes and specifications are indicative only, and subject to change without notice in accordance with the provisions in the Contract for Sale. In the event that there is any loss of discrepancy between the marketing plan for the Units, and the plans in the Contract for Sale, the Contract for Sale will prevail.