

#### 48/2 Peter Cullen Way Wright ACT

2 2 2

This immaculately presented and impeccably maintained two bedroom two bathroom apartment is as fresh and new as the day it was built!

Easy to live in, and all on one level, this apartment is very quiet and private with no overlooking from the surrounding apartments. It is spacious and tastefully decorated with a neutral colour palette throughout.

The light and airy kitchen includes stone benchtops, plenty of cupboard space (including a pantry), Ariston induction cooktop, electric oven and dishwasher - and a very stylish mixer tap over the double sink!

Both bedrooms easily accommodate a queen size bed and side tables, have generous built in robes and each has its own bathroom.

**Building Size** : 81 sqm  
**View** : <https://www.borisproperty.com.au/lease/act/weston-creek/wright/residential/apartment/5541306>

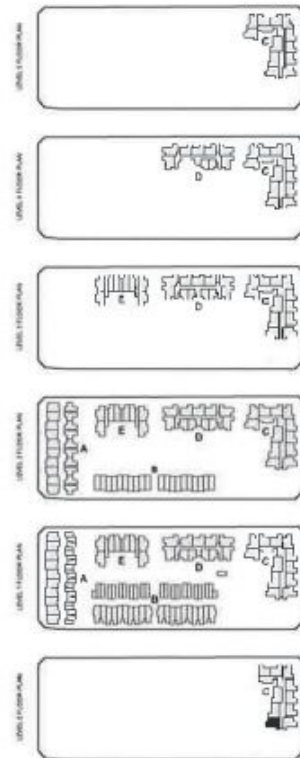


**Lee-Anne Radstaak**  
**0402219727**

# Unit C48



LIVING: 81m<sup>2</sup>  
 POS: 45m<sup>2</sup>  
 TOTAL: 126m<sup>2</sup>



**Disclaimer:**  
 All plans are subject to Development Application Approval. The area of each unit is calculated to external walls and works of common walls in accordance with ACTPLA Gross Floor Area guidelines. Internal dimensions are taken to wall faces and exclude internal wall thickness. It is the buyer's responsibility to verify and ensure that the drawings and information obtained from this document is the latest version. We reserve the right to change the drawings and any information contained in this document, by accessing this document you agree to the terms and conditions above.

