



### 505/21 Marcus Clarke Street City ACT

2 2 2

Prestigious New Acton East: Winner of the R.A.I.A Canberra Medallion

Supremely located in the tightly held, boutique and award-winning New Acton East building, this is a beautiful apartment. Loaded with modern design features such as 2.8 metre coffered ceiling bulkheads and exposed concrete soffits, double glazing, cutting edge finishes, Miele appliances and more, this is a cut above the rest. The location with its urban village amenity offers a terrific lifestyle on the edge of the city adjacent to both the Australian National University and Lake Burley Griffin.

Features:

• 91 sqm of living and 8 sqm balcony with mountain and water views

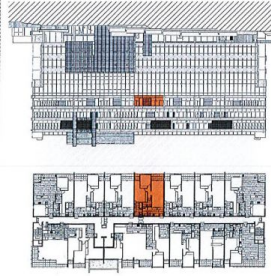
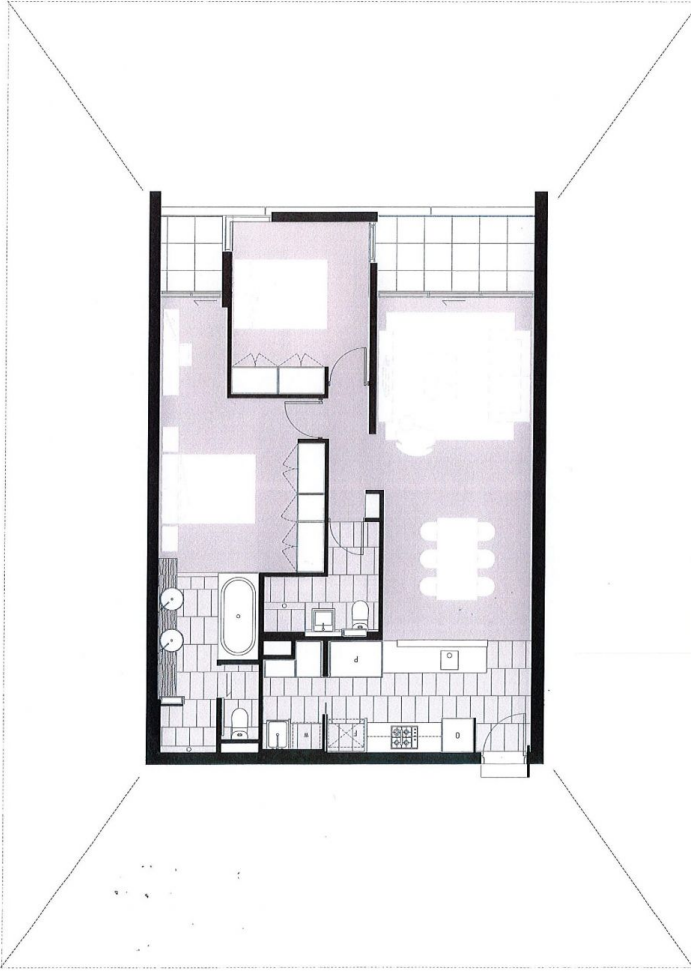
• Reverse cycle ducted air conditioning

**Building Size** : 91 sqm  
**View** : <https://www.borisproperty.com.au/sale/act/inner-north/city/residential/apartment/5541448>



**Boris Teodorowych**  
0402907182

# 2



NEWINGTON EAST  
APARTMENT 505  
2 BEDROOM  
LEVEL 5  
1/75

APARTMENT	91 m <sup>2</sup>
BALCONY	8 m <sup>2</sup>
TOTAL	99 m <sup>2</sup>

PHOTO AND DRAWINGS FOR INFORMATION ONLY. NOT TO BE USED FOR CONSTRUCTION.

1:75  
1:75  
1:75  
1:75  
1:75  
1:75  
1:75