

11/15 Charteris Crescent Chifley ACT

3 2 2

New to the rental market, this gorgeous centrally located home is a rare find!

In immaculate condition, this light and airy home will suit an executive couple or small family. The property includes top quality inclusions throughout including double glazing, security screen doors, loads of storage and a fabulous outdoor entertaining area and fully enclosed low maintenance yard. Walking distance to Woden with good schools and transport links nearby.

Features:

- ? Formal entry
- ? 131 sqm of north facing living area
- ? Spacious open plan living area with built-in joinery
- ? Well-appointed kitchen with gas cooktop

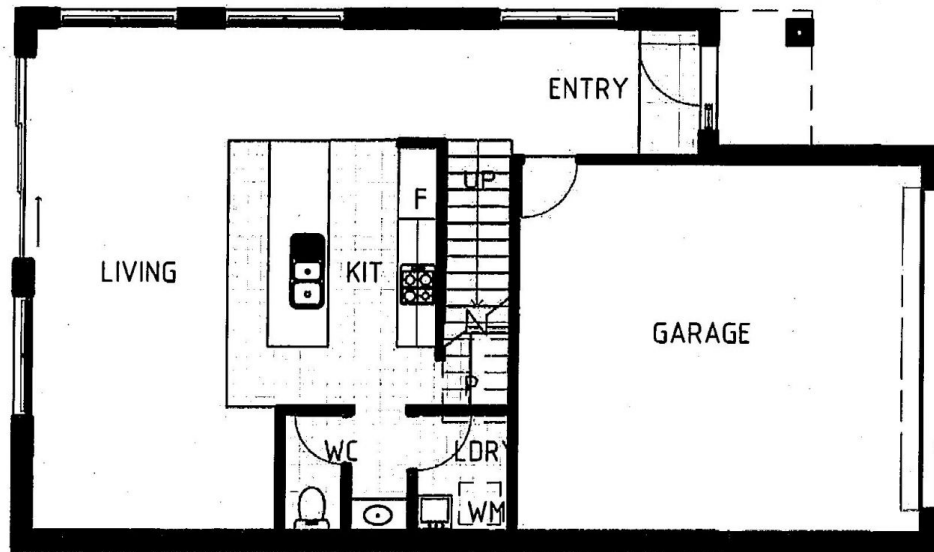
Building Size : 131 sqm
Land Size : 202 sqm
View : <https://www.borisproperty.com.au/lease/act/woden-valley/chifley/residential/townhouse/5541455>



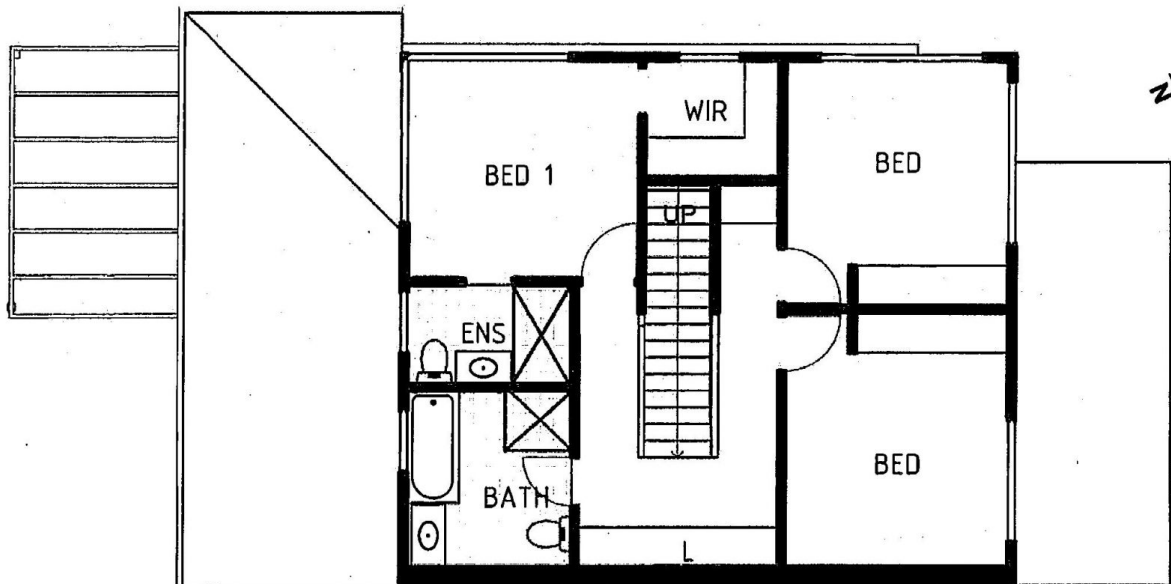
Lee-Anne Radstaak
0402219727

<https://www.borisproperty.com.au>





Unit 11



Ground Floor



First Floor

3	3	2	2
			
Living Area		131.7m ²	
Patio Area		12m ²	
Garage Area		36.7m ²	
Yard Area		202.1m ²	

 Charteris Park