



1300/39 London Circuit City ACT

2 2 2

The Capitol, Canberra City's newest, modern, high-rise LUXURY apartment building.

Building Size : 98 sqm
View : <https://www.borisproperty.com.au/lease/act/inner-north/city/residential/apartment/5541497>

Located right in the CBD, across from the Law Courts and Reserve Bank, this is the ultimate in City living.

The Australian National University is a very short walk away; as are numerous restaurants, cafés and bars. The bus interchange and tram-stop are just around the corner.

BORIS PROPERTY is proud to have a selection of beautiful apartments available for lease.



Boris Teodorowych
0402219727

Our range of spectacular SKYHOMES include;

1302- NOW RENTED

<https://www.borisproperty.com.au>

THE CAPITOL



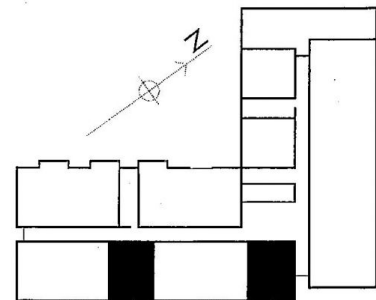
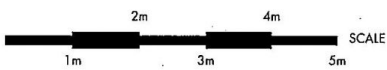
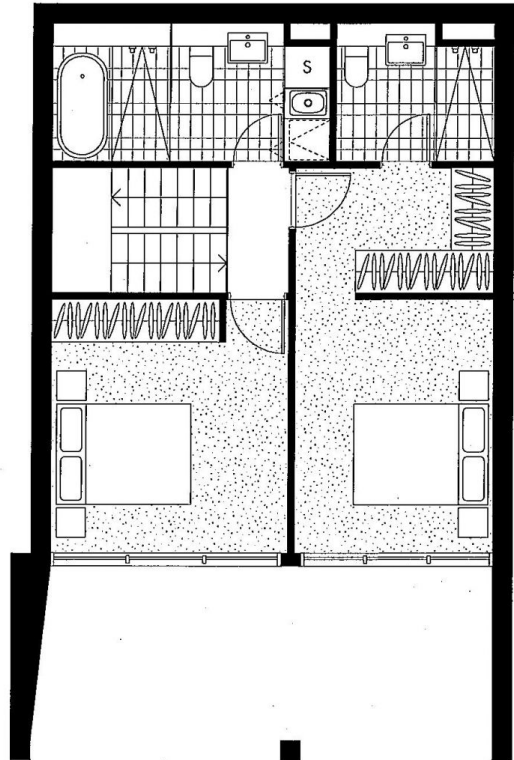
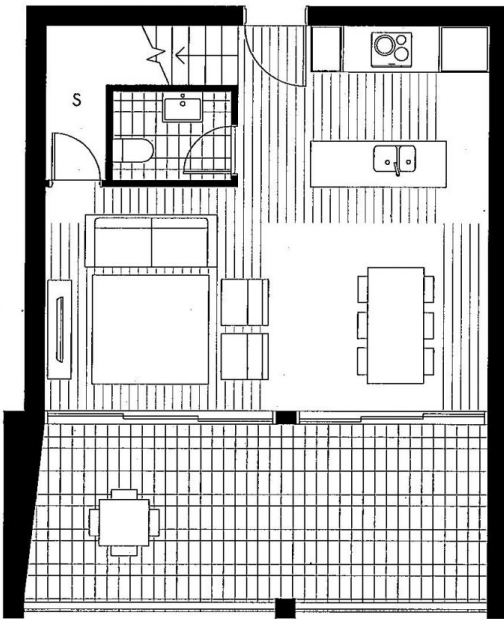
LONDON CIRCUIT • CANBERRA

2 BEDROOM LOFT, 2.5 BATHROOM, 2 CARS

Door 1304

APARTMENT NUMBER:
1401, 1404

APARTMENT AREA:
INTERNAL **98-100.1m²** EXTERNAL **21.5-22m²**
TOTAL **119.5-122.1m²**



a crafted project
crafted

Crafted Central Pty Limited and Cercle Real Estate Pty Limited do not guarantee, warrant or represent that the information contained in this advertisement and marketing document is correct. Any interested parties should make their own enquiries as to the accuracy of the information. Crafted Central Pty Limited and Cercle Real Estate Pty Limited exclude all implied terms, conditions, and warranties arising out of this document and any liability for the loss or damage arising there from. Unit Area has been calculated as Gross Floor Areas (to the outside of external walls and centre line of walls between units) and include riser shafts and vertical service ducts. Any furniture or loose items depicted in the marketing materials and/or plans are not included and are provided for illustrative purposes only.