

## 1004/39 London Circuit City ACT

2 2 2

The Capitol, one of Canberra City's newest high-rise LUXURY apartment buildings. Located right in the CBD, across from the Law Courts and Reserve Bank, this is the ultimate in City living. The Australian National University is a very short walk away; as are numerous restaurants, café's and bars. The bus interchange and tram-stop are just around the corner.

### Features

- ? Two bedrooms, Two bathrooms, covered balcony, Two secure car spaces, storage shed
- ? Corner position, great views over the city to the lake
- ? Elegantly appointed apartments with double glazing, timber flooring and Siemens appliances
- ? Ducted reverse cycle air conditioning
- ? Electric roller blinds with sheer curtains
- ? Spectacular entrance lobby with concierge service

**Building Size** : 83 sqm  
**View** : <https://www.borisproperty.com.au/lease/act/inner-north/city/residential/apartment/6355278>



**Sarah Davies**  
0488 555 110

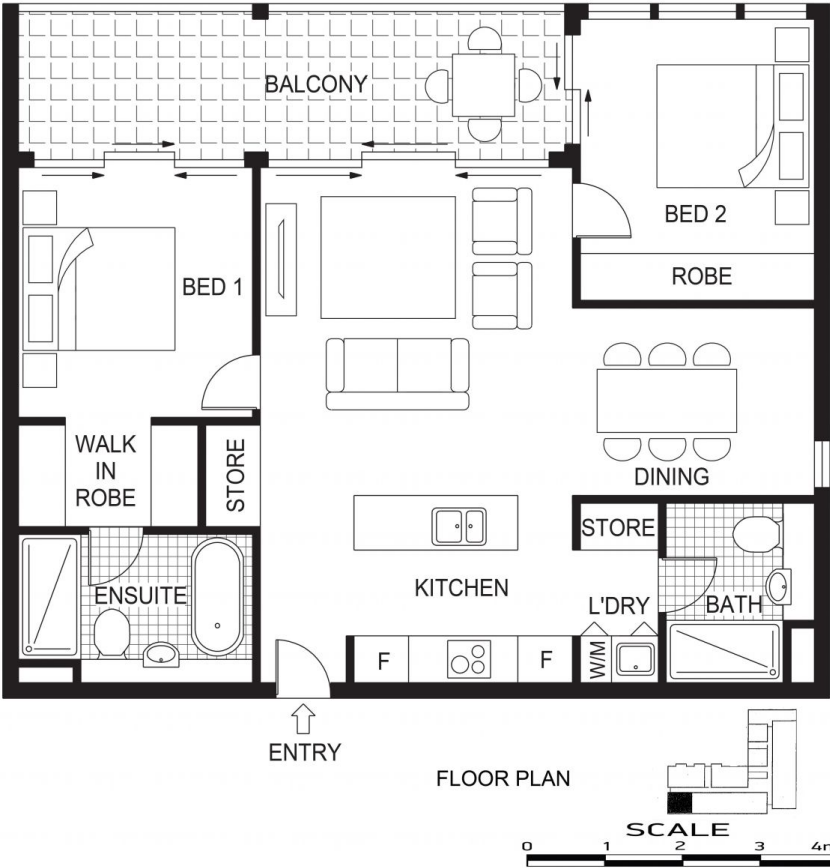


**Lee-Anne Radstaak**  
0402219727

THE CAPITOL

LONDON CIRCUIT • CANBERRA

BORIS.



1004 39 London Circuit, Canberra City

**Disclaimer:** This information has been provided to us from the vendor and/or their conveyancer or solicitor, no guarantee is given in respect of its accuracy. Any person viewing this information should make their own enquiries and only rely on those enquiries.