



1304/39 London Circuit City ACT

2 2 2

The Capitol Residences

Located right in the CBD, across from the Law Courts and Reserve Bank, this is the ultimate in City living.

The Australian National University is a very short walk away; as are numerous restaurants, café's and bars. The bus interchange and tram-stop are just around the corner.

Features

? Two bedroom, Two bathroom, Powder room, under stairs storage, large covered balcony, two secure car spaces, storage shed

? Elegantly appointed apartment with double glazing, stone benchtops, timber flooring and Siemens appliances including 600mm induction cooktop, oven and rangehood.

? Ducted reverse cycle air conditioning

? Master bedroom with walk-in-robe and ensuite

? Spectacular entrance lobby with concierge service

Building Size : 98 sqm

View

: <https://www.borisproperty.com.au/lease/act/inner-north/city/residential/apartment/6379660>



Sarah Davies
0488 555 110



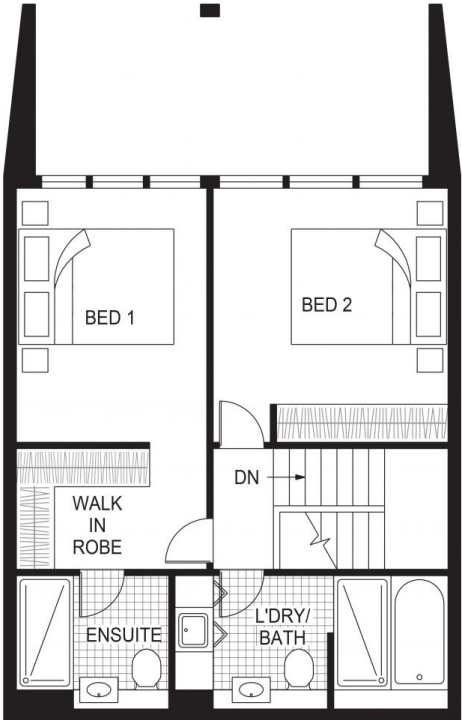
Lee-Anne Radstaak
0402219727

<https://www.borisproperty.com.au>

THE CAPITOL

LONDON CIRCUIT • CANBERRA

BORIS.



FLOOR PLAN



1304, 39 London Circuit, Canberra City

Disclaimer: This information has been provided to us from the vendor and or their conveyancer or solicitor, no guarantee is given in respect of its accuracy. Any person viewing this information should make their own enquiries and only rely on those enquiries.

