



136/20 Allara Street City ACT

2  2  1 

Park Avenue is Canberra City's newest Residential Apartment Tower.

This is one of the best views in Canberra- simply, a gorgeous apartment!

Offering a premium lifestyle in the heart of the City, the best of Canberra's retail and restaurants are a short walk away, as is Lake Burley Griffin, Glebe Park and the transport interchange. Casino Canberra is literally a stone's throw away. Rising to 17 floors, the building has a fully equipped gym and BBQ/entertaining area on level 4.

Features

- ? Floor to ceiling double glazed windows
- ? Spacious open plan design with high ceilings
- ? Franke kitchen system - Tectonite single bowl, pull-out

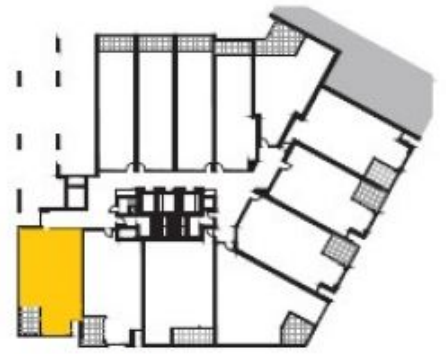
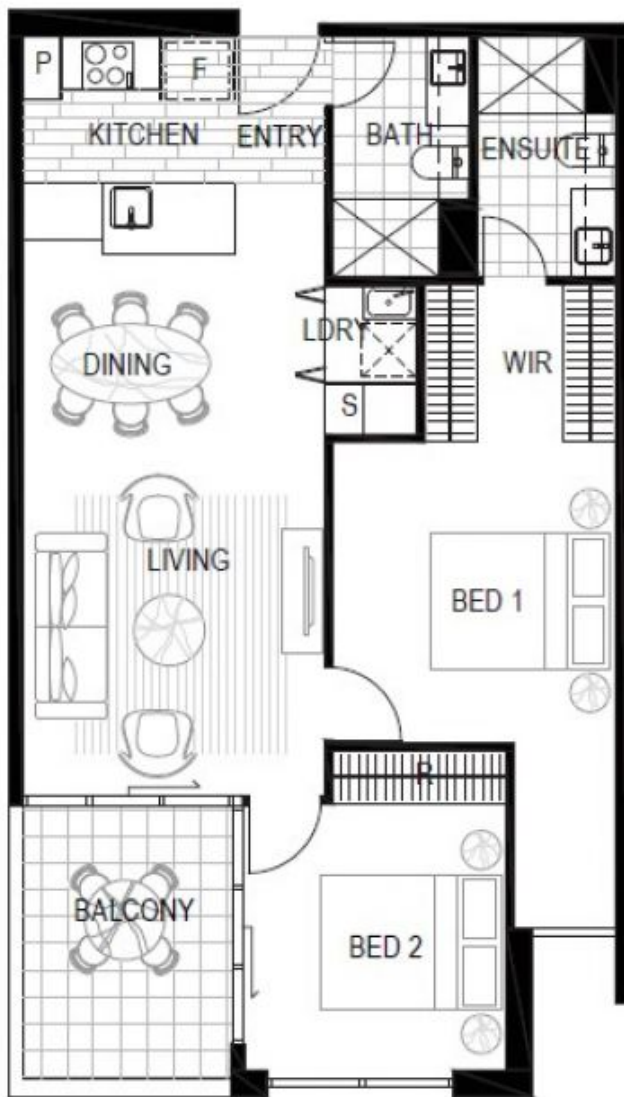
Building Size : 76 sqm
View : <https://www.borisproperty.com.au/lease/act/inner-north/city/residential/apartment/6449278>



Sarah Davies
0488 555 110



Boris Teodorowych
0402219727



LEVEL 5 - 14

