



**1004/39 London Circuit City ACT**

2 2 2

The Capitol, one of Canberra City's high-rise LUXURY apartment buildings.

Located right in the CBD, across from the Law Courts and Reserve Bank, this is the ultimate in City living. The Australian National University is a very short walk away; as are numerous restaurants, café's and bars. The bus interchange and tram-stop are just around the corner.

**Features**

- ? Two bedrooms, Two bathrooms, covered balcony, Two secure car spaces, storage shed
- ? Corner position on Level 10, great views over the city to the lake
- ? Elegantly appointed apartments with double glazing, timber flooring and Siemens appliances
- ? Ducted reverse cycle air conditioning
- ? Electric roller blinds with sheer curtains

**Building Size** : 84 sqm  
**View** : <https://www.borisproperty.com.au/lease/act/inner-north/city/residential/apartment/6777011>



**Sarah Davies**  
0488 555 110

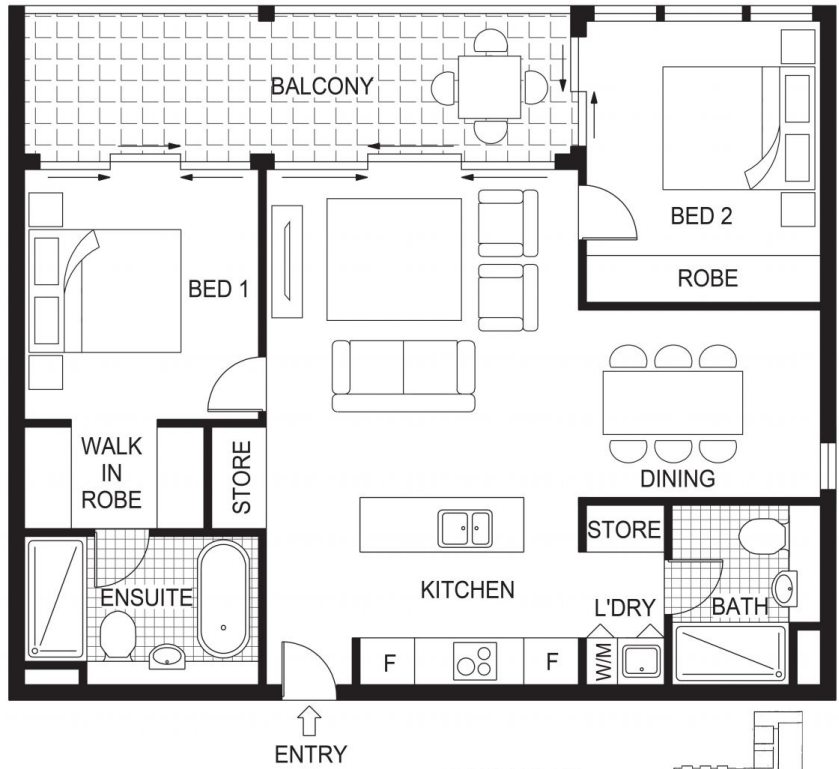


**Boris Teodorowych**  
0402219727

THE CAPITOL

LONDON CIRCUIT • CANBERRA

# BORIS.



ENTRY

FLOOR PLAN



1004 39 London Circuit, Canberra City

Disclaimer: This information has been provided to us from the vendor and or their conveyancer or solicitor, no guarantee is given in respect of its accuracy. Any person viewing this information should make their own enquiries and only rely on those enquiries.