

### 121/85 Eyre Street Kingston ACT

1 1 1

"The Prince" at Kingston Foreshore offers an unrivalled waterfront position and lifestyle. The Prince features a gorgeous garden for exclusive use of residents. The lobby entrances feature stone flooring and brass doors on the lift cars, elevating your experience each and every time.

**View** : <https://www.borisproperty.com.au/lease/act/inner-south/kingston/residential/apartment/6896725>

#### Apartment features:

- ? Timber flooring to living area
- ? Carpet to bedroom
- ? Double glazing to ALL windows
- ? 2.7m high ceilings
- ? Reverse cycle ducted air conditioning
- ? Stone benchtops in the kitchen
- ? ILVE 600mm induction cooktop, oven and range hood
- ? Plenty of wardrobing and storage within the apartment
- ? Secure basement parking, lockable storage and lift access



**Lee-Anne Radstaak**  
0402219727

A CRAFTED PROJECT

# EYRE

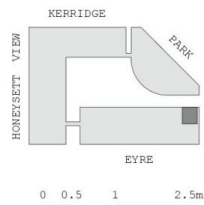
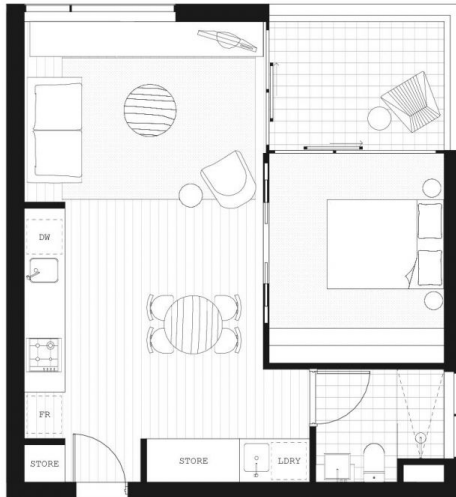
1 Bed × 1 Bath × 1 Car

**APARTMENT NUMBER**

108 (55) / 208 (90) / 308 (125)

**APARTMENT AREA**

Internal **56.7m<sup>2</sup>** / Balcony **8.3m<sup>2</sup>**  
Total **65.0m<sup>2</sup>**



Abacus Crafted 2 Pty Limited and Crafted Real Estate Pty Limited do not guarantee, warrant or represent that the information contained in this advertisement and marketing document is correct. Any interested parties should make their own enquiries as to the accuracy of the information. Abacus Crafted 2 Pty Limited and Crafted Real Estate Pty Limited exclude all implied terms, conditions, and warranties arising out of this document and any liability for the loss or damage arising there from. Unit Area has been calculated as Gross Floor Areas (to the outside of external walls and centre line of walls between units) and include riser shafts and vertical service ducts. Any furniture or loose items depicted in the marketing materials and/or plans are not included and are provided for illustrative purposes only.