

## 48/20 Allara Street City ACT

2 2 1

Located in the Park Avenue Apartment building, this spacious and sparkling apartment has an easterly aspect and lovely views out over leafy Reid and Campbell. Featuring gorgeous kitchen and bathroom fit-out, and spacious master bedroom with walk-in-robe to ensuite, this apartment is ready to move straight into or commence as an investment property.

If you are looking for the ultimate city lifestyle, then look no further.

Enjoy a plethora of entertainment, dining and retail opportunities at your doorstep. Canberra centre is one block away and Commonwealth Park is at the end of your street!

Residents of Park Avenue have access to fabulous communal facilities including gym, BBQ and entertaining

**Price** : \$ 710,000  
**Building Size** : 82 sqm  
**View** : <https://www.borisproperty.com.au/sale/act/inner-north/city/residential/apartment/6945862>

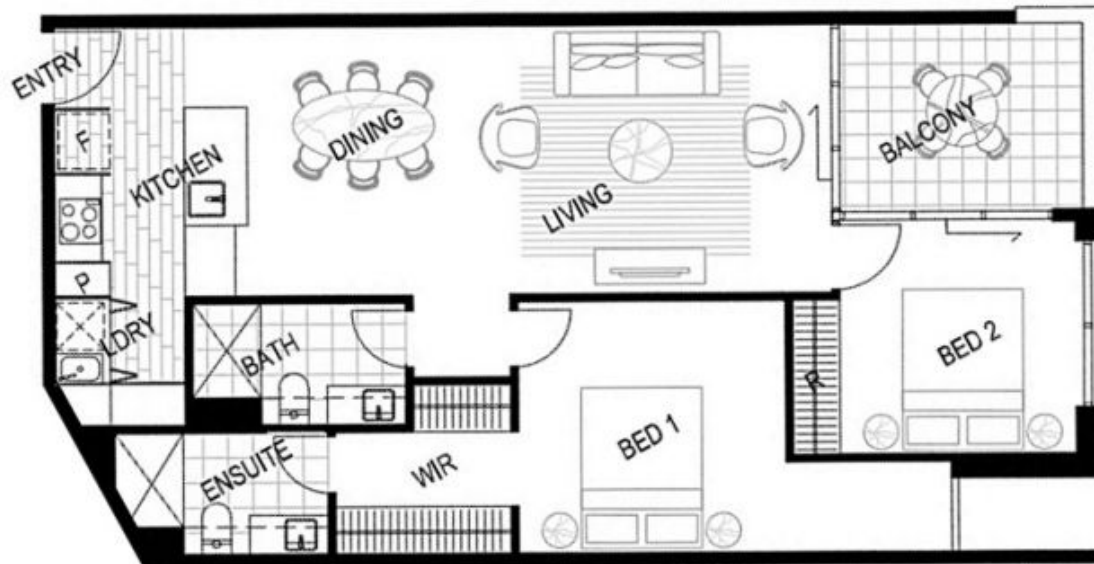


**Boris Teodorowych**  
0402219727



**Sarah Davies**  
0488 555 110

<https://www.borisproperty.com.au>



INTERNAL  
82m<sup>2</sup>

EXTERNAL  
7m<sup>2</sup>

CAR SPACES  
1

## 48/20 ALLARA ST, CITY

Scale in meters. Indicative only. Dimensions are approximate. All information contained herein is gathered from source we believe to be reliable. However we cannot guarantee its accuracy and interested parties should rely on their own enquiries

# BORIS.