



## 105/20 Allara Street City ACT

2 2 2

If space is what you are after then take a look inside! 'Park Avenue' is Canberra's newest lifestyle offering in the heart of the City.

The best of Canberra's retail and restaurants are a short walk away, as is Lake Burley Griffin, Glebe Park and the transport interchange.

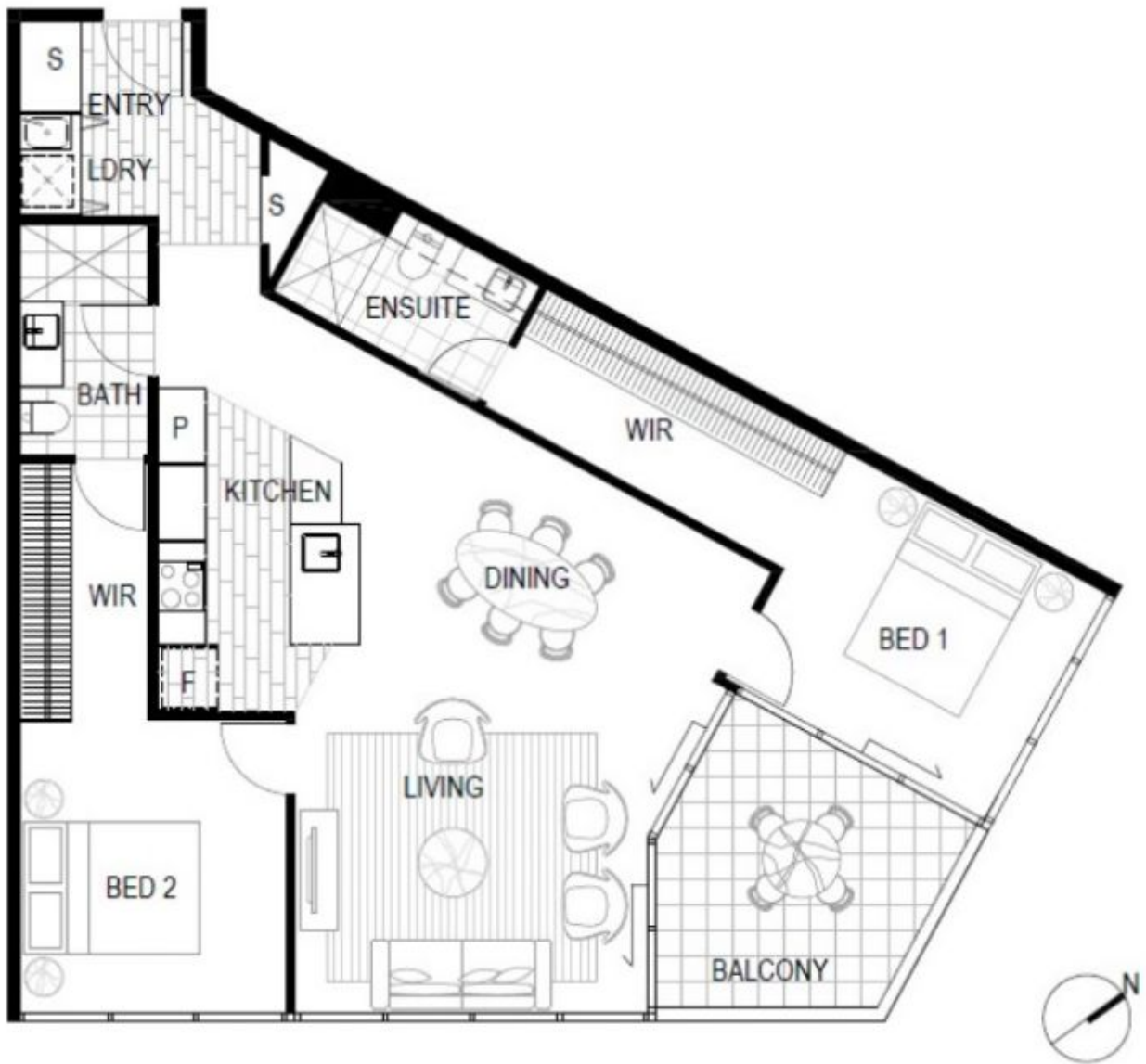
### Features:

- ? Floor to ceiling double glazed windows
- ? Spacious open plan design with high ceilings
- ? Luxury kitchen with Franke kitchen system, 10 function oven, ceramic cooktop, dishwasher and integrated microwave oven
- ? Laundry includes washing machine and condenser dryer
- ? Walk in wardrobes
- ? Superb bathrooms fitted with Parisi tapware and accessories

**Building Size** : 94 sqm  
**View** : <https://www.borisproperty.com.au/lease/act/inner-north/city/residential/apartment/7035372>



**Sarah Davies**  
**0488 555 110**



0 1 5 m  
1:100@A4