

## 48/135 Easty Street Phillip ACT

2 2 2

Arbour is a wonderful townhouse development located in a super central location. It's an easy walk to The Canberra Hospital, Woden Plaza and Town Centre, public transport hub, numerous eateries, gyms, Southern Cross Club and Hellenic Club, CIT and more. The convenience and lifestyle on offer is fantastic.

Residence 48 is a private tri-level townhome offering two living areas, kitchen with stone benchtops and GAS cooktop, segregated bedrooms, two bathrooms and plenty of wardrobe space.

Reverse cycle air conditioning for warm winters and cool summers. This property comes with a double (tandem) lock-up garage.

Features:

? Funky tri level design

? Two living area

? Stone benchtops, AEG appliances including gas cook top

**Land Size** : 8170 sqm

**View** : <https://www.borisproperty.com.au/lease/act/woden-valley/phillip/residential/townhouse/7051080>



**Liz Elliott**  
0402219727



**Lee-Anne Radstaak**  
0402219727

DEVELOPMENT LOGO

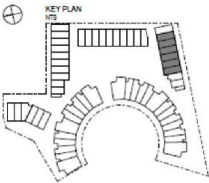
BLOCK 26 SECTION 158 PHILLIP

TOWNHOUSE TYPE - TH2B

2 BEDROOM

Living area: 102.5 m<sup>2</sup>  
Courtyard: 17.8 m<sup>2</sup>  
Balcony: 5 m<sup>2</sup>  
Garage: 46.8 m<sup>2</sup>

UNIT NUMBERS 46, 48, 50  
UNIT NUMBERS (MARKED): 47, 49, 51



CL CLOTHES LINE  
AC AIR CONDITIONER  
F REFRIGERATOR  
L LAUNDRY  
P PANTRY  
R ROBE  
S STORAGE

