



58/20 Allara Street City ACT

1 1 1

Park Avenue offers a premium lifestyle in the heart of the City, the best of Canberra's retail and restaurants are a short walk away, as is Lake Burley Griffin, Glebe Park and the transport interchange. Casino Canberra is literally a stone's throw away. Rising to 17 floors, the building has a fully equipped gym and BBQ/entertaining area on level 4.

Building Size : 61 sqm
View : <https://www.borisproperty.com.au/lease/act/inner-north/city/residential/apartment/7115884>

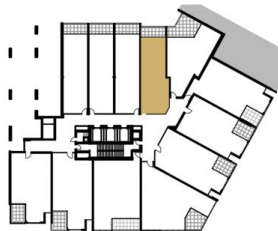
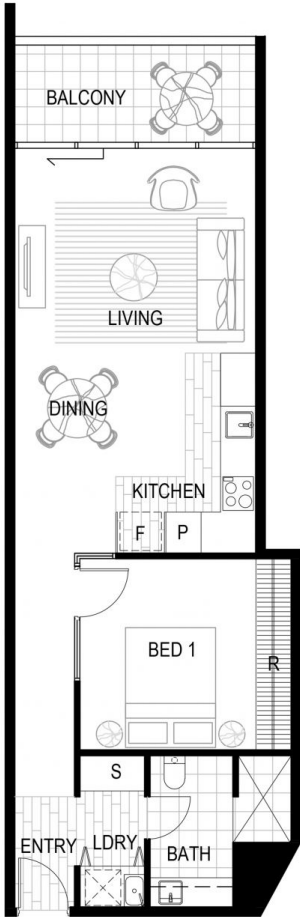
Features

- ? Floor to ceiling double glazed windows
- ? Spacious open plan design with high ceilings
- ? Franke kitchen system- Tectonite single bowl, pull-out spray kitchen mixer
- ? Franke 10 function oven, ceramic cooktop, integrated microwave, oven, dishwasher
- ? Kitchen has stone benchtops, splashbacks and soft close joinery



Sarah Davies
0488 555 110

BORIS.



LEVEL 5-17

Morris Property Group do not guarantee, warrant or represent that the following information contained in this advertisement and marketing document is correct. Any interested parties should make their own inquiries as to the accuracy of the information. We exclude all inferred or implied terms, conditions and warranties arising out of this document and any liability for the loss or damage arising there from. Areas shown from centerline of internal walls/corridor walls and external face of glazing/external walls. External areas taken to internal face of balcony balustrades. Void are excluded from calculations. This layout may be subject to minor amendments and dimensional changes to suit final working drawings and grid layouts.