



11/100 Port Jackson Circuit Phillip ACT

2 **1** **1**

"Windsor Terrace" is a solid brick boutique complex located in a quiet enclave in the heart of Woden, and a short walk to Canberra Hospital and the Town centre.

This charming walk-up apartment has to be seen to be appreciated. Very private and full of natural light, the apartment has an amazing outlook into a grove of mature pine trees, immediately empowering you with a sense of calm and serenity. Freshly painted and with new carpet, the apartment is as neat as a pin.

This 3 sided apartment features generous sized rooms throughout. Separate entry hall leads past bedroom 2, the bathroom/laundry, bedroom 1 into a spacious open plan living and dining area, which spills onto a sensational balcony in the trees. The kitchen is a delight, with an abundance of bench space and cupboards. The main

Building Size : 80 sqm
View : <https://www.borisproperty.com.au/sale/act/woden-valley/phillip/residential/apartment/7158913>

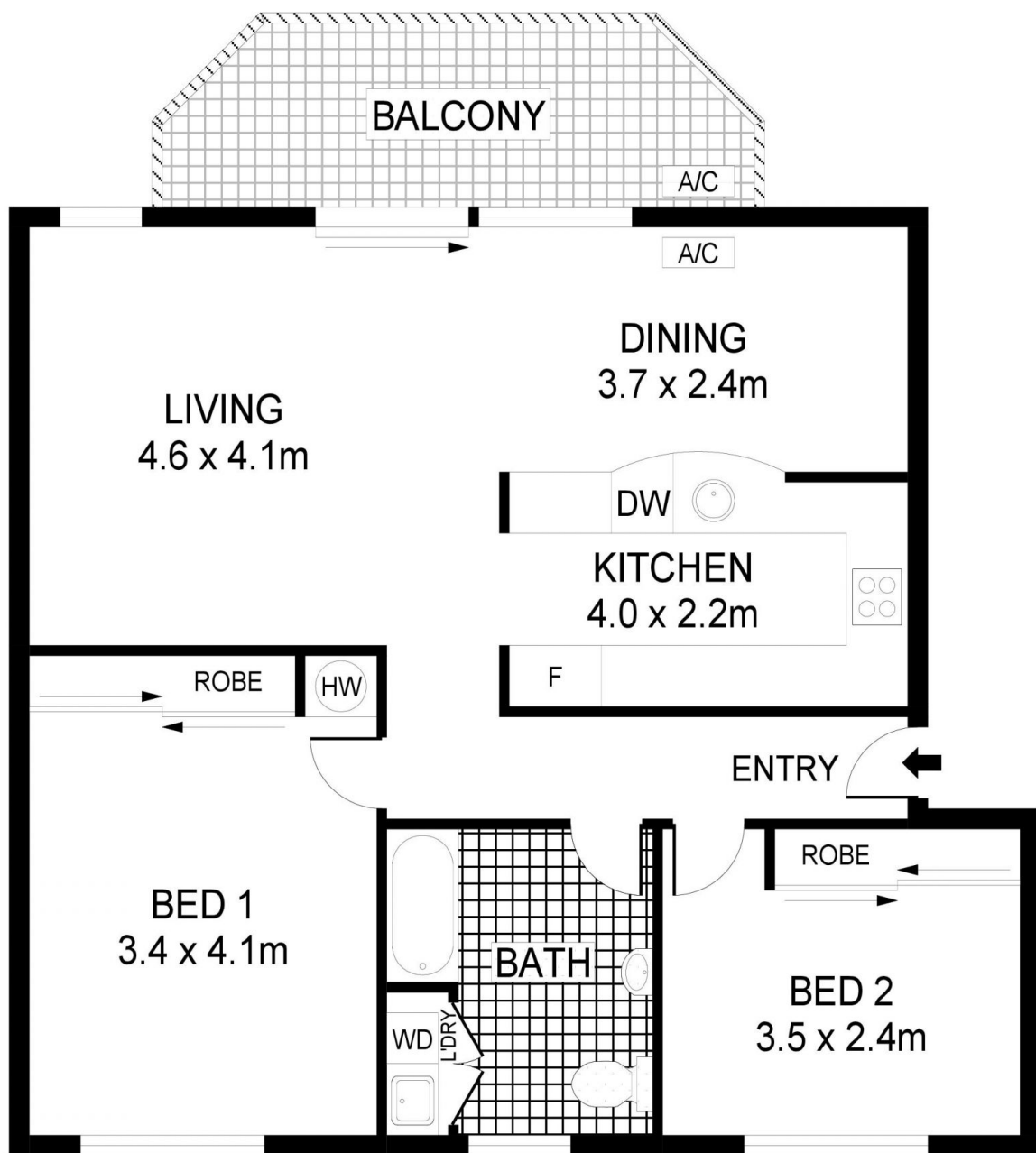


Boris Teodorowych
0402219727



Sarah Davies
0488 555 110

<https://www.borisproperty.com.au>



INT : 79.84m²

11 100 PORT JACKSON COURT, PHILLIP

Scale in meters. Indicative only. Dimensions are approximate. All information contained herein is gathered from sources we believe to be reliable. However we cannot guarantee its accuracy and interested parties should rely on their own enquiries.

BORIS.