



### 30/7 Sydney Avenue Barton ACT

1 1 1

Magnificently maintained and presented, expensively appointed Executive Apartment in the Heart of Realm. Exceptionally large bedroom and wardrobe.

If you have been in the quest for a modern luxury apartment, that has been beautifully styled and equipped from top to bottom, then look no further. Perched high up on level 7, the large one-bedroom apartment has soaring northerly views to the city and beyond. Turn to the left and you pick up the leafy outlook over Forrest and Red Hill. The property is full of natural light and will take advantage of the winter sun.

Supremely located in the popular and vibrant Realm Precinct, you are but a short walk from so many A grade office buildings, Manuka, Kingston and Lake Burley Griffin. Together with the immediate convenience on hand within

**Price** : \$ 570,000  
**Building Size** : 71 sqm  
**View** : <https://www.borisproperty.com.au/sale/act/inner-south/barton/residential/apartment/7239086>

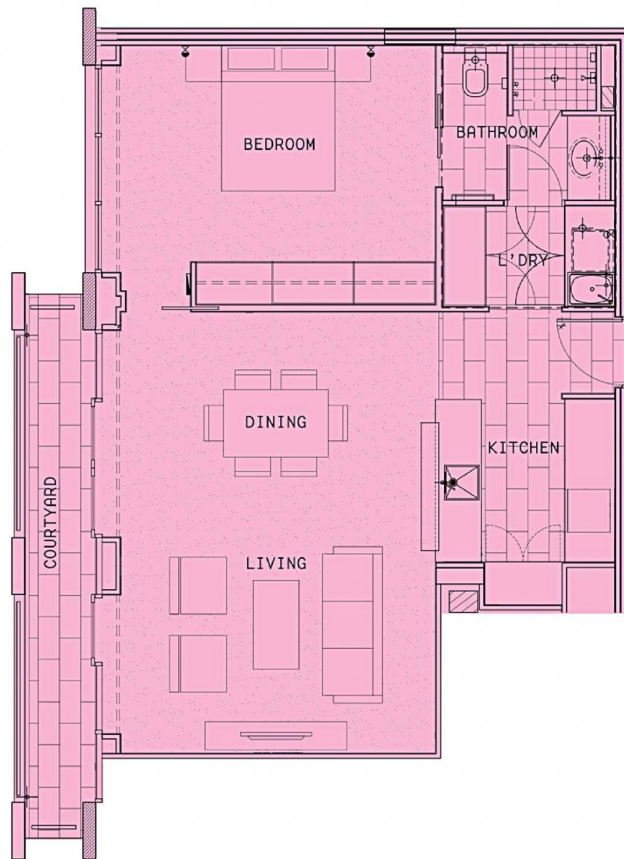


**Boris Teodorowych**  
0402219727



**Sarah Davies**  
0488 555 110

# FLOOR PLAN



INTERNAL  
71m<sup>2</sup>

BALCONY  
7m<sup>2</sup>

CAR SPACES  
1



## 30/7 SYDNEY AVENUE BARTON

Scale in meters. Indicative only. Dimensions are approximate. All information contained herein is gathered from source we believe to be reliable. However we cannot guarantee its accuracy and interested parties should rely on their own enquiries

# BORIS.