

63/7 Light Street Griffith ACT

1 1 1

Supremely located in RENAISSANCE between Manuka and Kingston, this apartment is in 'as new' condition and features up-market inclusions throughout.

Everything cool about the Inner South is a short stroll away and if quality of lifestyle is important to you, then inspection is a must!

Located on level 3, the apartment looks across Light Park to panoramic district views. Secure building with allocated car space next to the lift.

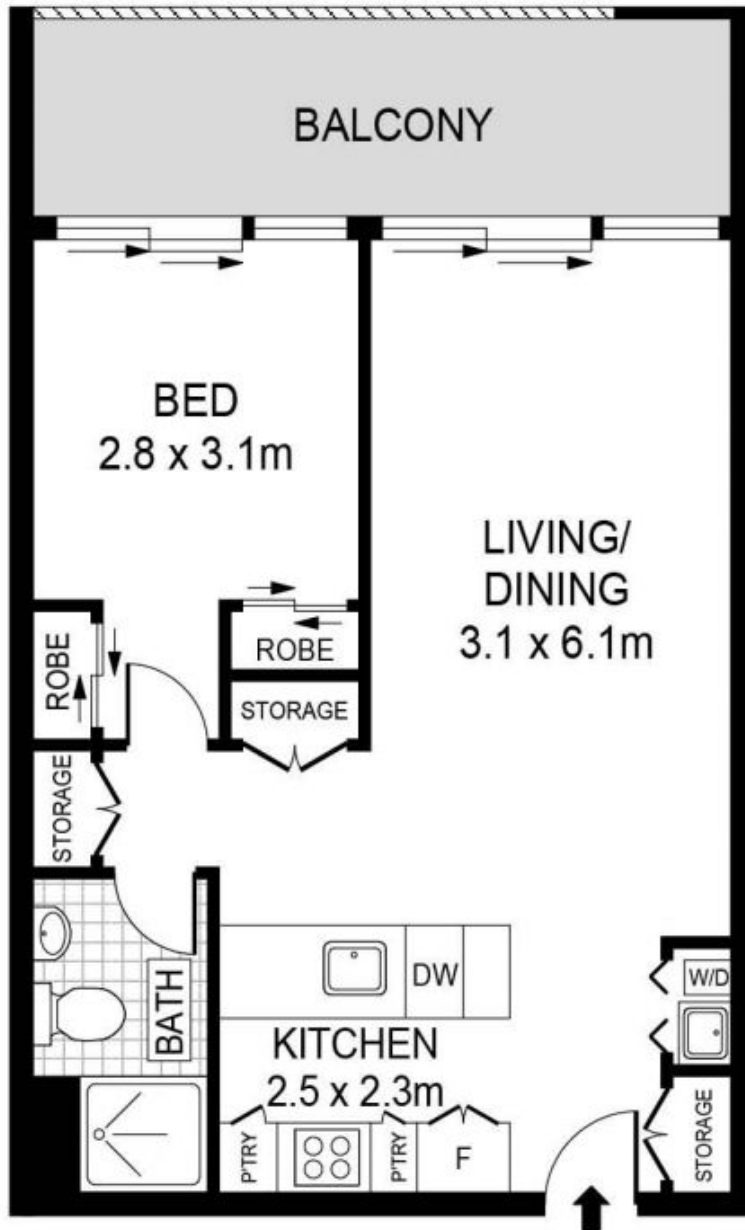
FEATURES

- Timber floor to living area, carpet to bedroom
- Reverse cycle air conditioning
- Integrated fridge/freezer and microwave
- Induction cooktop, oven and dishwasher

Building Size : 53 sqm
View : <https://www.borisproperty.com.au/lease/act/inner-south/griffith/residential/apartment/7406006>



Lee-Anne Radstaak
0402219727



63/7 LIGHT STREET, GRIFFITH

Scale in meters. Indicative only. Dimensions are approximate. All information contained herein is gathered from sources we believe to be reliable. However we cannot guarantee its accuracy and interested parties should rely on their own enquiries.

BORIS.