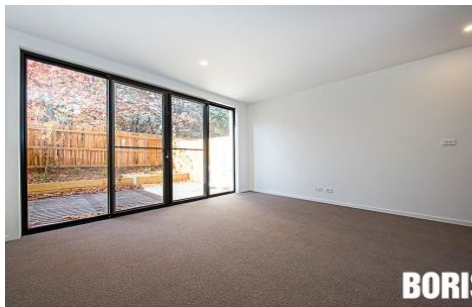




**BORIS**



**BORIS**



**BORIS**



**BORIS**

### 36/135 Easty Street Phillip ACT

2  2  2 

Arbour is a wonderful townhouse development located in a super central location. It's an easy walk to The Canberra Hospital, Woden Plaza and Town Centre, public transport hub, numerous eateries, gyms, Southern Cross Club, Hellenic Club and more. The convenience and lifestyle on offer is second to none.

Residence 36 is a private tri-level townhome offering two living areas, galley kitchen with stone benchtops and gas cooktop, segregated bedrooms, two bathrooms and plenty of wardrobe space.

Reverse cycle air conditioning for warm winters and cool summers. This property comes with a double (tandem) lock-up garage.

Features:

? Functional tri level design

**View** : <https://www.borisproperty.com.au/lease/act/woden-valley/phillip/residential/townhouse/7412855>



**Liz Elliott**  
**0402219727**