



13/11 Sydney Avenue Barton ACT

2 2 2

Located on the corner of National Circuit and Sydney Avenue, 'Realm Quarters' offers the very best of prestigious apartment living in a premium position. Perched up on floor 5, with a triple frontage layout all on one level, the apartment is spacious, sun drenched and beautifully appointed. The huge picture windows capture the iconic views towards St Andrews Cathedral, Parliament House and Black Mountain Tower. Located a short stroll from DFAT, numerous other A grade office buildings, the area is also in the 'catchment zone' for Forrest PS, Telopea Park School, and Narrabundah College.

Large, segregated bedroom suites are either side of generous living areas, which include defined living, dining, and winter garden zones. The large kitchen is appointed with Miele appliances and has abundant storage and bench space. The apartment conveniently offers a designated

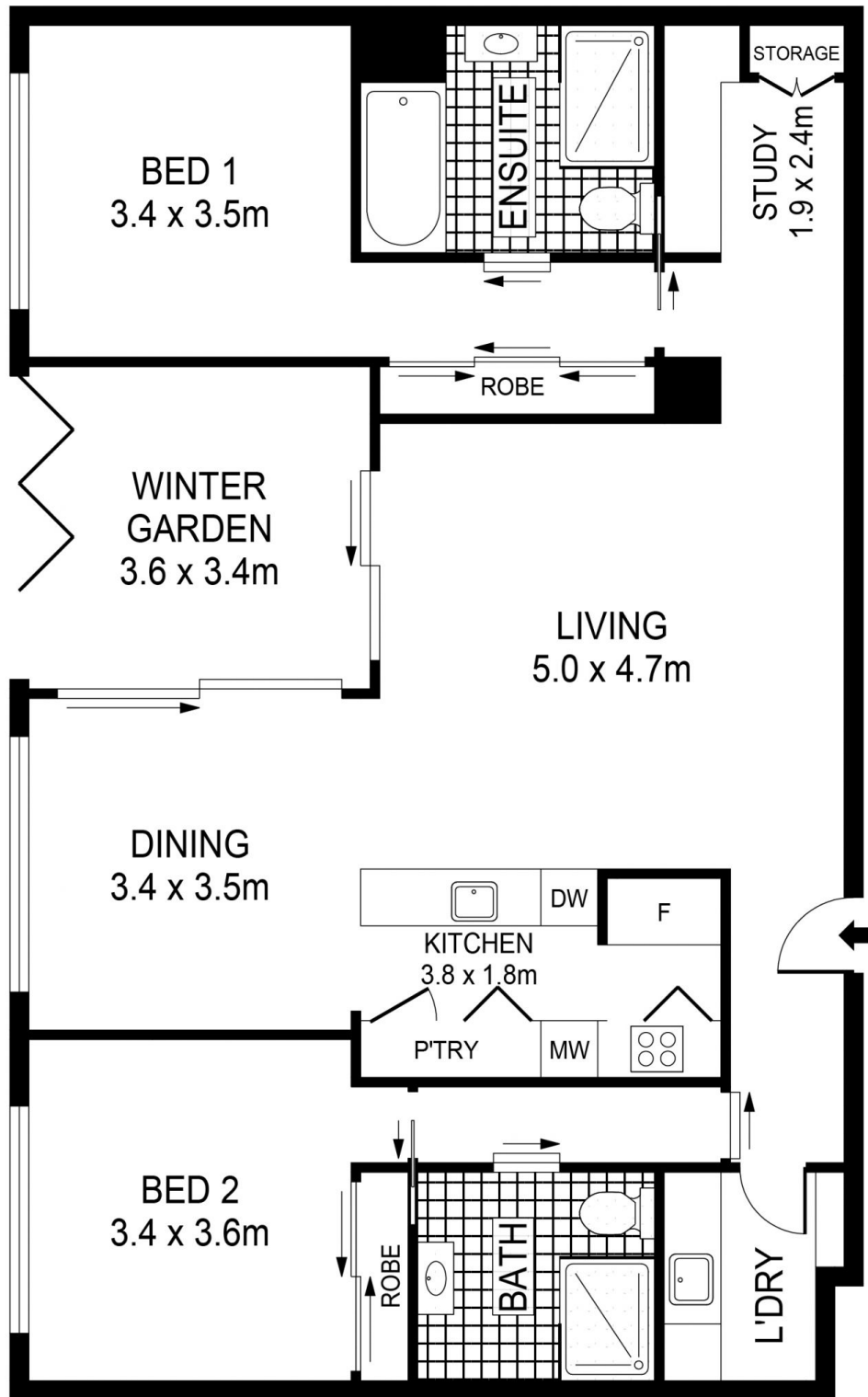
Building Size : 138 sqm

View

: <https://www.borisproperty.com.au/sale/act/inner-south/barton/residential/apartment/7413253>



Boris Teodorowych
0402219727



INTERNAL : 124m²
WINTER GARDEN : 14m²

13/11 SYDNEY AVENUE, BARTON

Scale in meters. Indicative only. Dimensions are approximate. All information contained herein is gathered from sources we believe to be reliable. However we cannot guarantee its accuracy and interested parties should rely on their own enquiries.

BORIS.