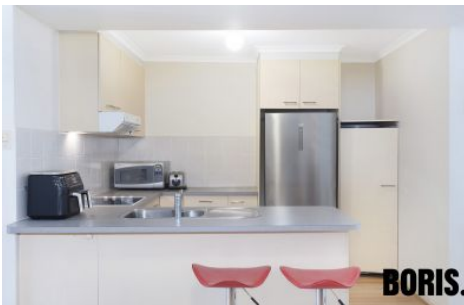




BORIS.



BORIS.



BORIS.



BORIS.

14/10 Ovens Street Griffith ACT

2 2 1

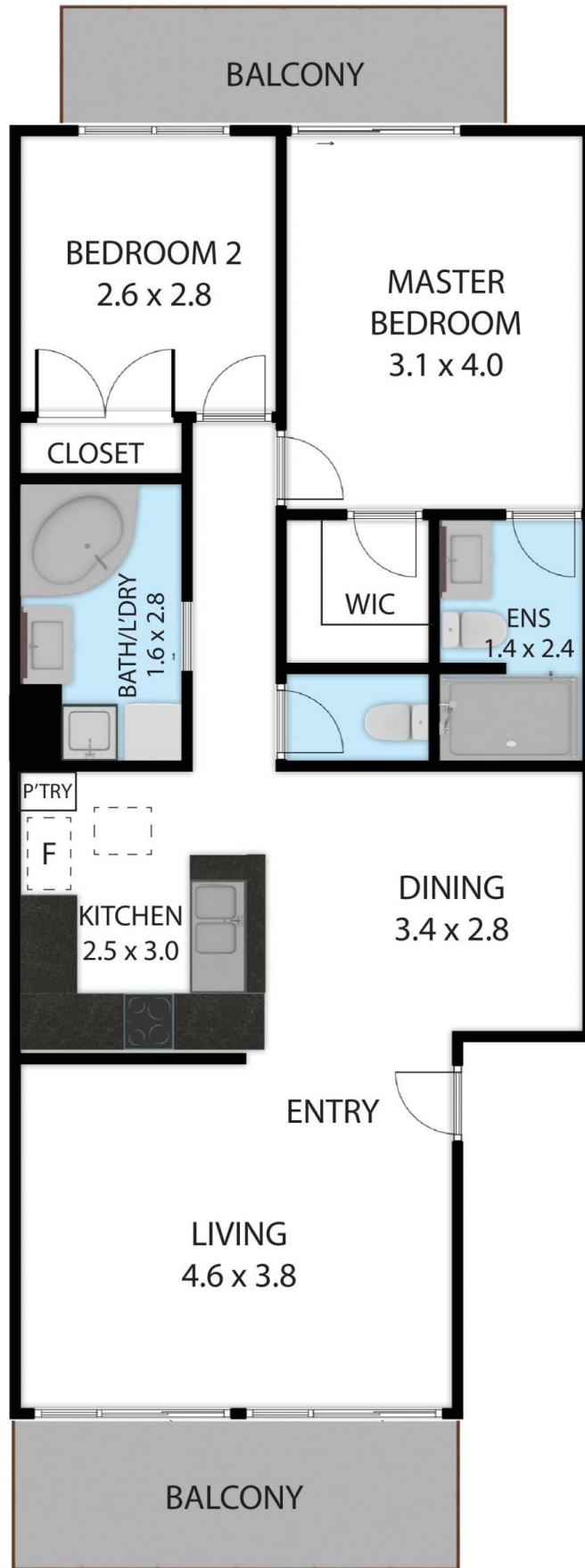
Located on the Griffith/Kingston border in one of the inner south's most beautiful streets, this apartment is easy walking distance to both Kingston and Manuka villages. Built in 1994, 'Francis Court' is a solid double brick walk-up apartment block, with no basement and no lifts. The property comes with a single lock-up garage. Positioned on the first floor, this apartment has a gorgeous outlook into the Chinese Elms and is very private.

The delightful open-plan living area boasts a lovely light and bright outlook which provides plenty of room to both relax and entertain, with a spacious lounge and dining configuration which opens out onto a covered north facing balcony. The centrally located kitchen is generous in size with good storage, all-electric cooking, dual sinks, and a dishwasher.

Price : \$ 640,000
Building Size : 81 sqm
View : <https://www.borisproperty.com.au/sale/act/inner-south/griffith/residential/apartment/7508939>



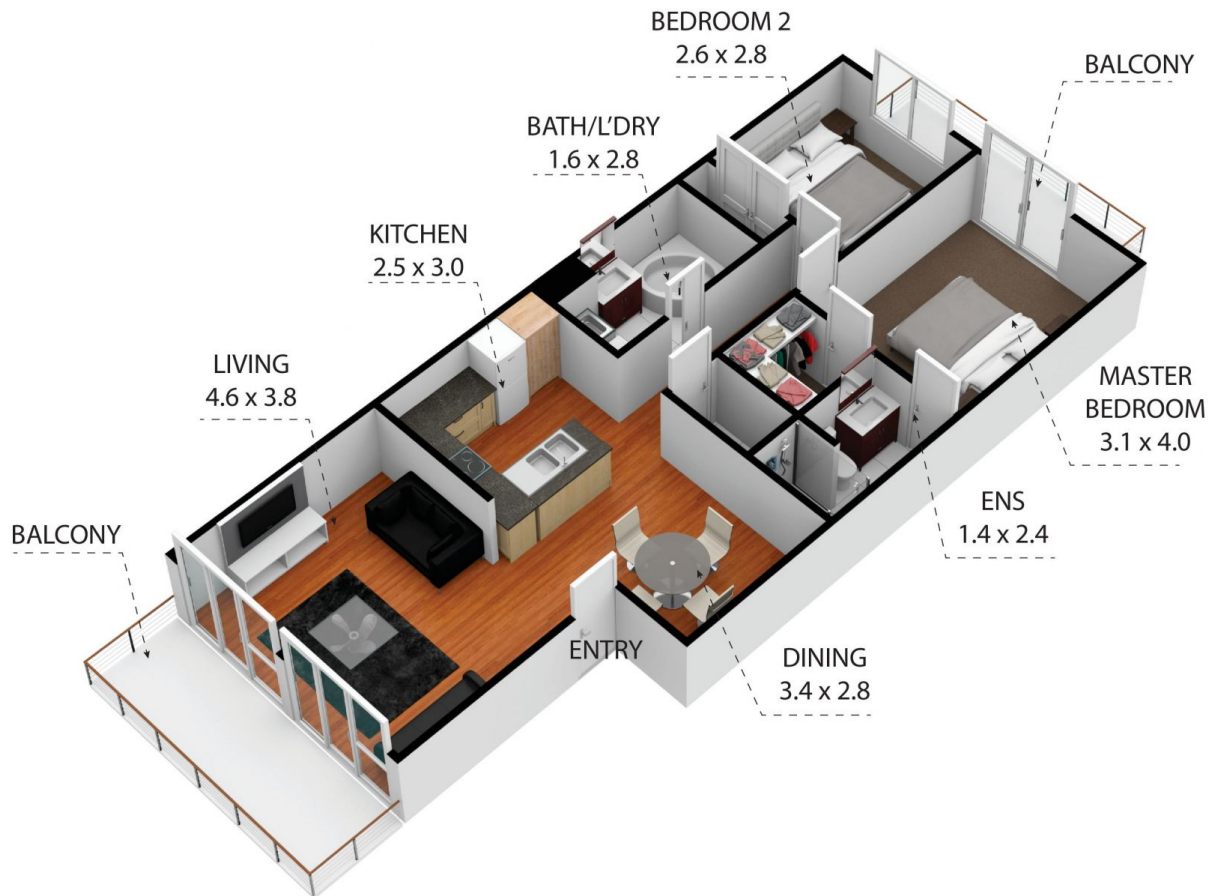
Boris Teodorowych
0402219727



Francis Court, 14/10 Ovens Street, Griffith 2603

TOTAL APPROX. FLOOR AREA 74 SQ.M

Whilst every attempt has been made to ensure the accuracy of the floor plan contained here, measurements of doors, windows, rooms and any other items are approximate and no responsibility is taken for any error, omission, or misstatement. This plan is for illustrative purposes only and should be used as such by any prospective purchaser.



Francis Court, 14/10 Ovens Street, Griffith 2603

TOTAL APPROX. FLOOR AREA 74 SQ.M

Whilst every attempt has been made to ensure the accuracy of the floor plan contained here, measurements of doors, windows, rooms and any other items are approximate and no responsibility is taken for any error, omission, or misstatement. This plan is for illustrative purposes only and should be used as such by any prospective purchaser.