



201/86-88 Northbourne Avenue Braddon ACT

1  1  1 

VACANT POSSESSION, ready to move straight into.

Brilliantly located at the City end of popular Braddon, 'The Phoenix' offers a cosmopolitan lifestyle with numerous bars, cafes and restaurants close by. The Canberra Centre, bus interchange and the ANU are within easy walking distance and the Light Rail is literally at your doorstep.

Located on the second floor, the apartment is secure, spacious, bright and sunny, and enjoys a true north aspect and private leafy outlook. The covered balcony has views over Turner to Black Mountain and is shaded by the trees.

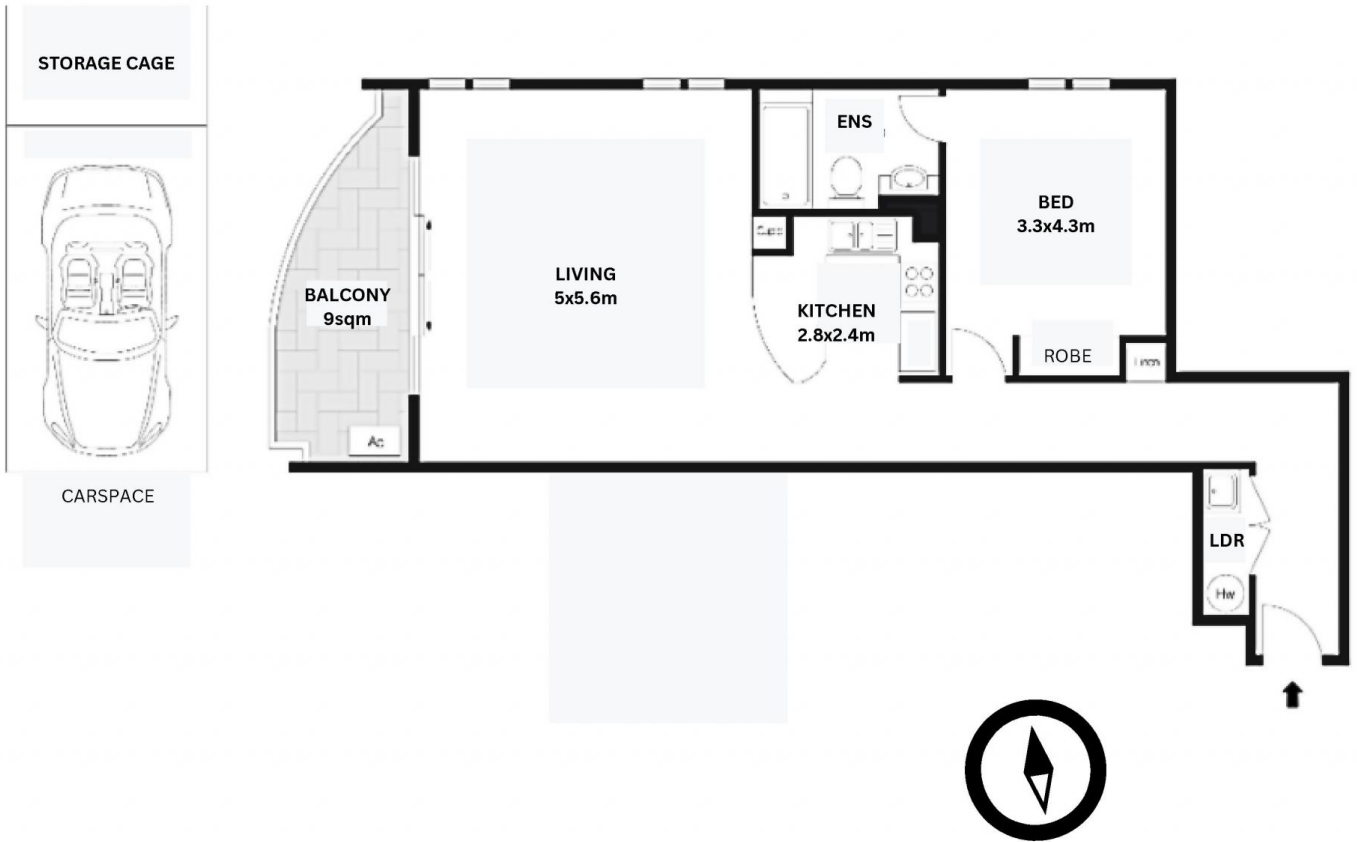
In recent years, the apartment has undergone renovation with new paint, carpet, window treatments and replacement of the original split system air conditioner with a new one. The bathroom

Price : \$ 430,000
Building Size : 68 sqm
Land Size : 4181 sqm
View : <https://www.borisproperty.com.au/sale/act/inner-north/braddon/residential/apartment/7753699>



Boris Teodorowych
0402219727

<https://www.borisproperty.com.au>



'THE PHOENIX'

201/86-88 NORTHBOURNE AVENUE BRADDON

All information contained herein is gathered from a source we believe to be reliable. However we cannot guarantee its accuracy and interested parties should rely on their own enquiries

BORIS.