



805/39 London Circuit City ACT

2 1 1

The Capitol, a modern, high-rise luxury apartment building. Located right in the CBD, across from the Law Courts and Reserve Bank, this is the ultimate in City living.

Features

- ? Two bedrooms, one bathroom, covered balcony, one secure car space, storage shed
- ? Elegantly appointed apartment with double glazing, stone benchtops, timber flooring and Siemens appliances including 600mm induction cooktop, oven and rangehood.
- ? Ducted reverse cycle air conditioning
- ? Spectacular entrance lobby with concierge service inclusive of cool-room and package-room
- ? Gym and sauna
- ? Available 20 November 2023
- ? Property is exempt from the minimum ceiling standard
- ? Owners permission required for pets

Building Size : 68 sqm
Land Size : 67 sqm
View : <https://www.borisproperty.com.au/lease/act/inner-north/city/residential/apartment/7808025>

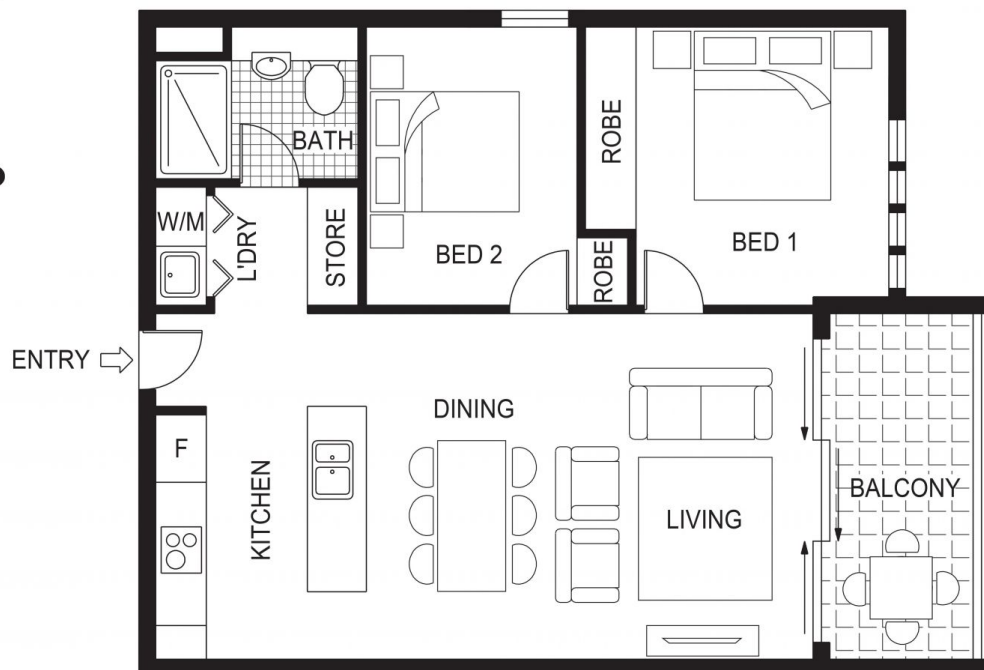


Lee-Anne Radstaak
0402219727

THE CAPITOL

LONDON CIRCUIT • CANBERRA

BORIS.



FLOOR PLAN



805, 39 London Circuit, Canberra City

Disclaimer: This information has been provided to us from the vendor and or their conveyancer or solicitor, no guarantee is given in respect of its accuracy. Any person viewing this information should make their own enquiries and only rely on those enquiries.

