

32/17 Trevillian Quay Kingston ACT

3 2 2

'Bridgepoint' is exclusively located at the end of 'The Island', overlooking Lake Burley Griffin and the wetlands. Tightly held, boutique and highly sought after, Bridgepoint offers the ultimate in Kingston Foreshore apartment living, where location, amenity and lifestyle combine to offer the very best of Canberra.

Perched on the third floor with optimal, unobstructed views across Lake Burley Griffin towards the City, the aspect and panorama is spectacular. The view is enjoyed from the kitchen, living area, master bedroom and the huge covered balcony. The sunsets over the Lake are particularly special!

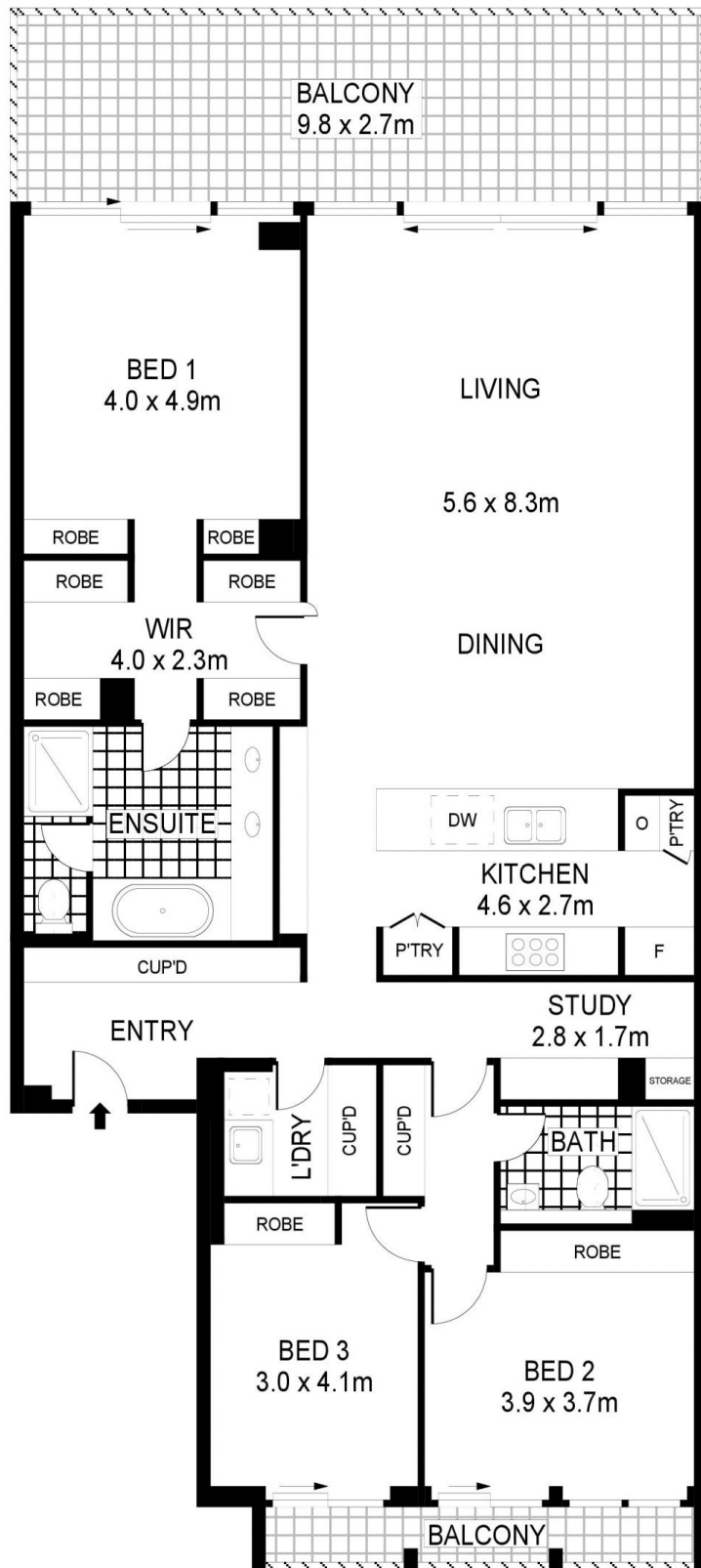
The luxury apartment offers bespoke design over 172sqm of living across a single level. The kitchen, open plan living area and master bedroom suite are spacious and magnificently appointed. The apartment also features lift to

Building Size : 172 sqm
View : <https://www.borisproperty.com.au/lease/act/inner-south/kingston/residential/apartment/7860172>



Lee-Anne Radstaak
0402219727

<https://www.borisproperty.com.au>



INT : 172m²
 EXT : 30m²
 TOTAL : 202m²

32/17 TREVILLIAN QUAY, KINGSTON

Scale in meters. Indicative only. Dimensions are approximate. All information contained herein is gathered from sources we believe to be reliable. However we cannot guarantee its accuracy and interested parties should rely on their own enquiries.

BORIS.