



## 201/86-88 Northbourne Avenue Braddon ACT

1  1  1 

Apartment 201 has just had a fantastic makeover with new paint and carpet throughout and will suit the most fastidious occupant.

**View** : <https://www.borisproperty.com.au/lease/act/inner-north/braddon/residential/apartment/7903464>

This spacious apartment is bigger than comparable apartments, offers a true northerly aspect and a private outlook into mature trees from the covered balcony.



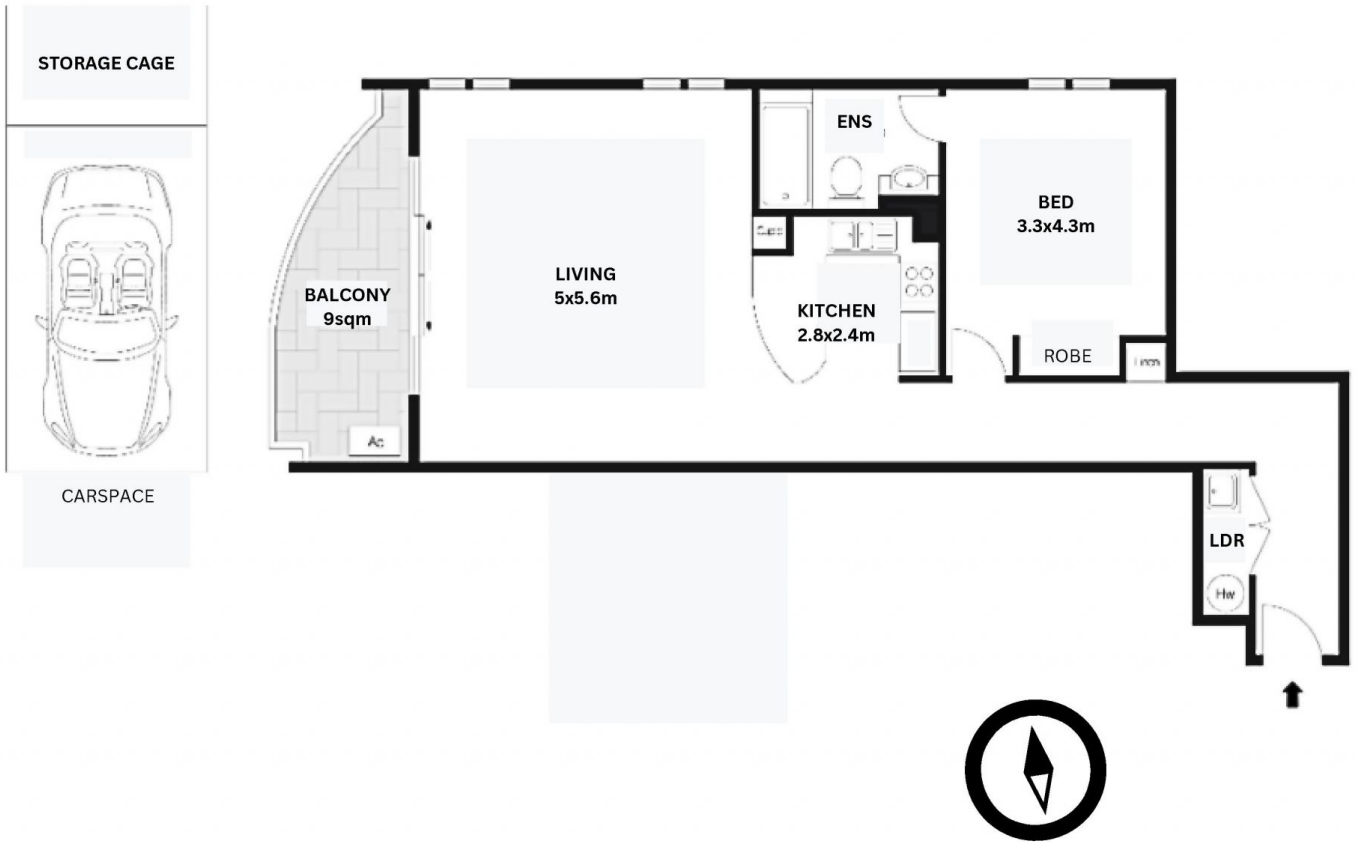
**Lee-Anne Radstaak**  
0402219727

Dual aspect windows mean this property is cool in summer and warm in winter and running costs are low.

The kitchen features electric cooking, granite benchtops and a dishwasher.

The bathroom features a bath big enough to soak in!

The Phoenix development is co-located with some of the



## 'THE PHOENIX'

**201/86-88 NORTHBOURNE AVENUE BRADDON**

All information contained herein is gathered from a source we believe to be reliable. However we cannot guarantee its accuracy and interested parties should rely on their own enquiries

**BORIS.**