



63/7 Light Street Griffith ACT

1 1 1

Supremely located in RENAISSANCE 1 between Manuka and Kingston, this apartment is only 2 years young and features up-market inclusions throughout.

Everything cool about the Inner South is a short stroll away and if quality of lifestyle is important to you, then inspection is a must!

Located on level 3, the apartment looks across Light Park to panoramic district views. Secure building with allocated car space next to the lift.

The property is for sale VACANT POSSESSION. Perfect for you to move into this fabulous building and prime inner south location.

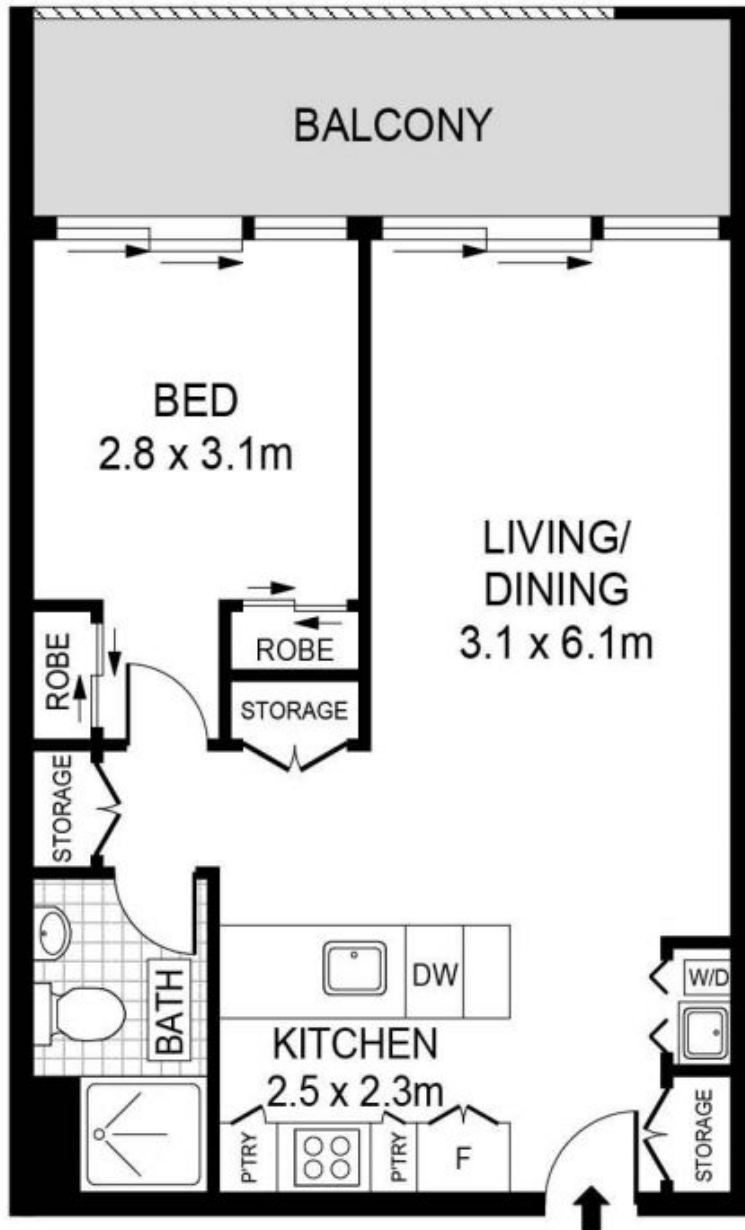
This terrific apartment would suit both live-in owners or

Price : \$539,900
Building Size : 53 sqm
View : <https://www.borisproperty.com.au/sale/act/inner-south/griffith/residential/apartment/7907372>



Boris Teodorowych
0402219727

<https://www.borisproperty.com.au>



63/7 LIGHT STREET, GRIFFITH

Scale in meters. Indicative only. Dimensions are approximate. All information contained herein is gathered from sources we believe to be reliable. However we cannot guarantee its accuracy and interested parties should rely on their own enquiries.

BORIS.