



14/1 Mouat Street Lyneham ACT

2 2 2

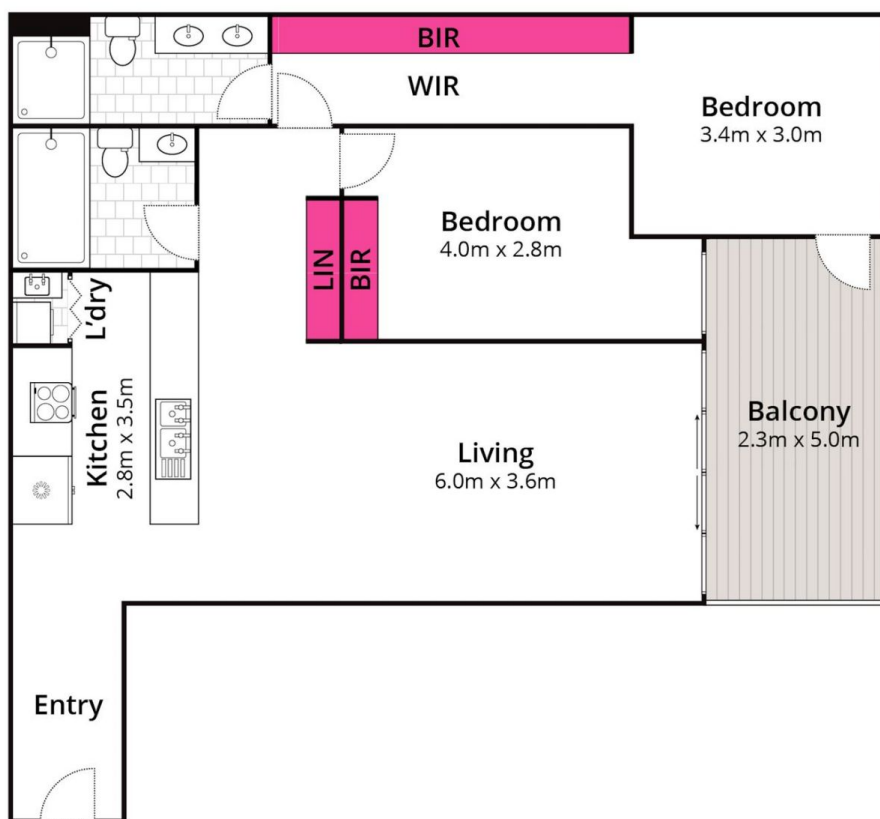
Peacefully and Privately positioned in the popular AXIS building in the heart of the Inner North, this spacious apartment offers over 90 square metres of internal living plus large sheltered balcony. The apartment is on the quiet side, away from busy Mouat Street noise and the hustle and bustle of Northbourne Avenue, however close enough to be a short stroll to the bus and light rail station at Dickson. A super convenient location, close to Lyneham HS, Lyneham PS and Brindabella Christian College. Want to kick a footy? Southwell Park is across the road. Yowani Golf Club and Next Gen fitness hub are also nearby. AXIS has its own gym and indoor pool for your convenience.

This serene apartment has been renovated and is in almost as new condition.
All the hard work completed includes;

Price : \$ 620,000
Building Size : 92 sqm
View : <https://www.borisproperty.com.au/sale/act/inner-north/lyneham/residential/apartment/7958169>



Boris Teodorowych
0402219727



Whilst bwrm.com.au has made every attempt to ensure the accuracy of the floor plan contained here, measurements are approximate and no responsibility is taken for any error, omission, or mis-statement. This plan is for illustrative purposes only.

14/1 Mouat Street, Lyneham

BORIS.
PROPERTY