



101/20-22 Eyre Street Kingston ACT

2 2 2

Nestled amidst the charming tree-lined streets of Kingston, Kingston Place presents a remarkable collection of residences that elevate living to a new level. This spacious and sunlit apartment, situated high up on level 3, offers a coveted north-easterly aspect and stunning district views across Kingston.

Inside, the galley kitchen boasting a sleek black granite benchtop, glass splashback, Miele appliances, and ample storage. The open-plan living area flows seamlessly onto a generous covered balcony, providing an ideal setting for relaxation or entertaining.

The master suite is ingeniously designed for privacy, offering a light-filled and spacious bedroom with direct

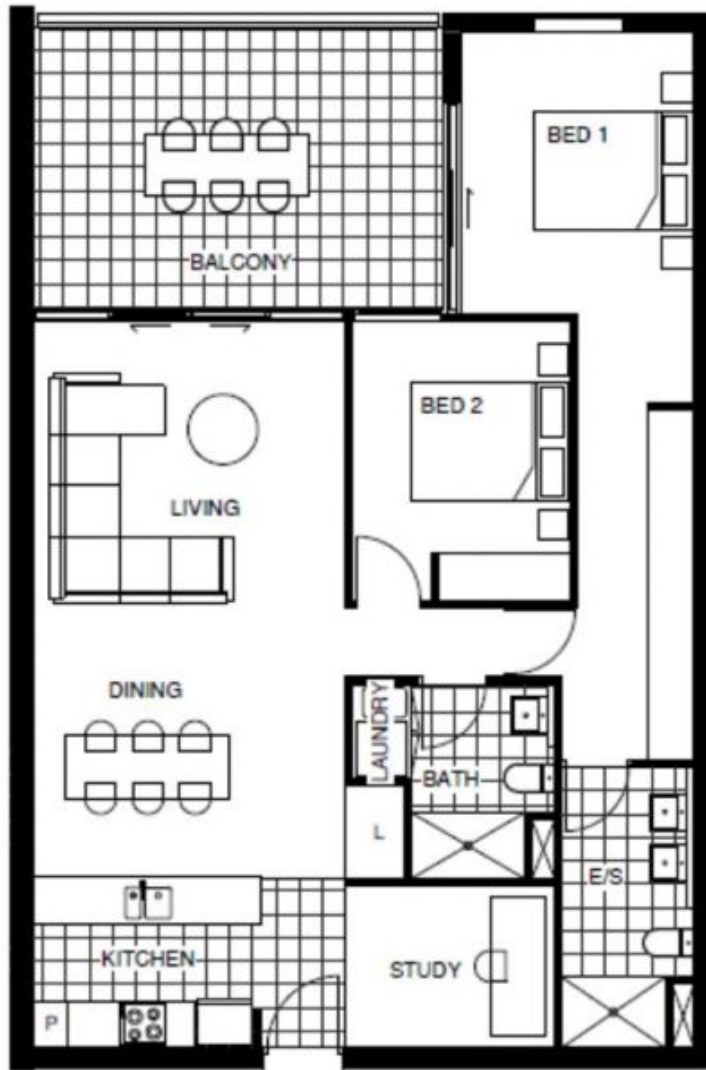
[For full version visit the website](https://www.borisproperty.com.au)

Type : Apartment
Price : \$ 785,000
Building Size : 97 sqm
View : <https://www.borisproperty.com.au/sale/act/inner-south/kingston/residential/apartment/8016273>



Lee-Anne Radstaak
0402219727

<https://www.borisproperty.com.au>



101/20-22 Eyre St Kingston

All information contained herein is gathered from a source we believe to be reliable. However we cannot guarantee its accuracy and interested parties should rely on their own enquiries

BORIS.