

1315/39 London Circuit City ACT

1  1  1 

'The Capitol', completed in mid 2020 is an upmarket residential tower located right in the Canberra CBD, across from the Law Courts and Reserve Bank, and a short walk to the Australian National University. The Apartment is full of light with a sunny aspect and offers a cool lay-out- the perfect inner city pad!

On the lower level is the kitchen and open plan living area, full width balcony, powder room/laundry, under-stairs storage/cellar.

On the upper level, a large study + nook, luxury bathroom, huge bank of storage cupboards, bedroom with built-in wardrobe.

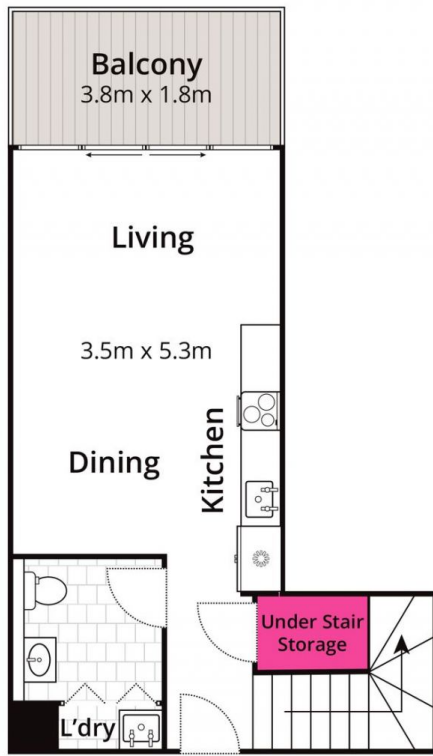
[For full version visit the website](https://www.borisproperty.com.au)

Type : Apartment
Building Size : 67 sqm
View : <https://www.borisproperty.com.au/sale/act/inner-north/city/residential/apartment/8240784>

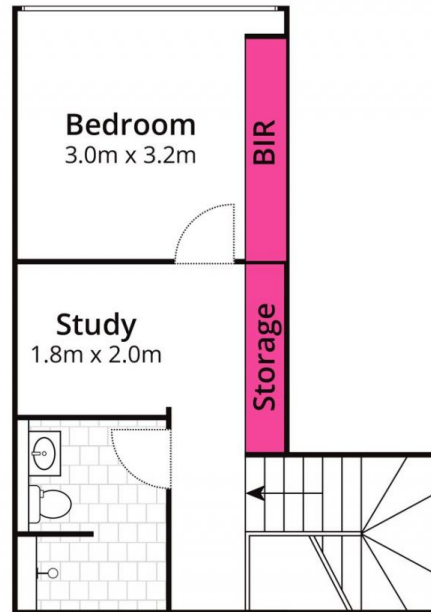


Boris Teodorowych
0402219727

<https://www.borisproperty.com.au>



Ground Floor



Upper Floor

Whilst bwrn.com.au has made every attempt to ensure the accuracy of the floor plan contained here, measurements are approximate and no responsibility is taken for any error, omission, or mis-statement. This plan is for illustrative purposes only.

1315/39 London Circuit, Canberra

BORIS.
PROPERTY